



RM

THE POWER OF GOOD **DESIGN** IS THE
RIGHT **APPLICATION**.[”]



ABOUT US

Riva Interior Architecture is a Riva Engineering group company.

We are a team that has been carrying out many designs and implementation projects with our strong and dynamic employees since 2006.

By taking firm steps forward in the architectural design-application sector, we offer high-quality, economical and aesthetic solutions for you.

From the first line of your dream space to the last brush movement in workmanship, we help you with a team that has mastered every category in the field of design and application.

WE THINK ABOUT YOU

While turning the projects of your dreams into reality, we offer high-quality solutions that appeal to you, in line with your needs and wishes, and for your budget.

WE WORK TOGETHER

We make you a part of our team by exchanging information in every project in every design-application step. We are meticulously finishing the works we have taken by offering new and effective solutions together.

%100 CUSTOMER SATISFACTION

Turn-key design and implementation processes of apartments, villas, detached houses, mansions

Turn-key design and implementation processes of office workplaces located in buildings such as towers, shopping malls, residences, squares

Turn-key design and implementation processes of health structures (clinic, beauty centers etc.)

Turn-key design and implementation processes of Cafe-restaurant located in shopping malls, towers, residences or detached places

Turn-key application processes of complex structures such as factory, factory, workshop

Rough-fine construction and infrastructure works

Steel Construction works

Furniture-aluminum composite and glass works

Mechanical and electrical installation works

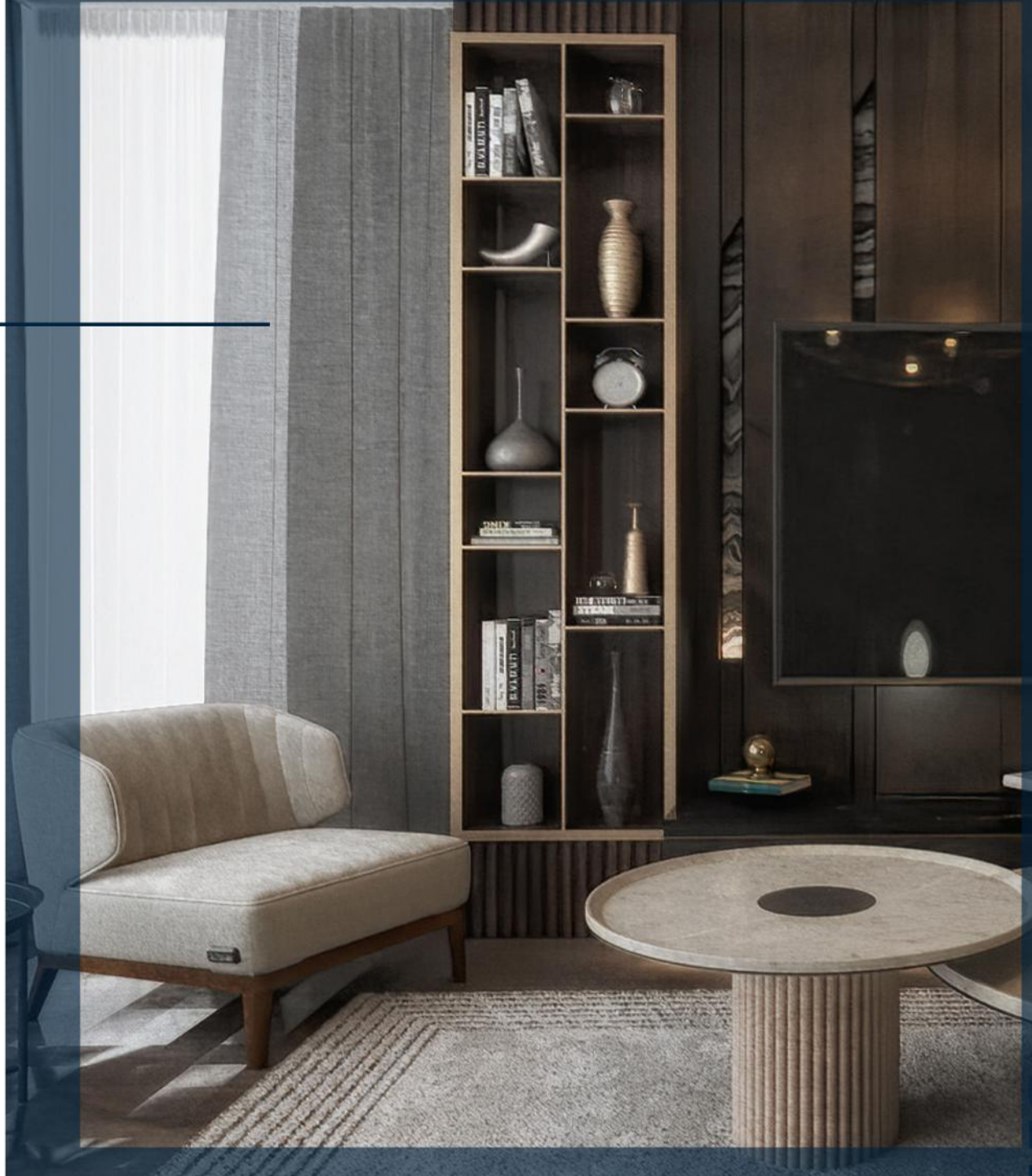
Landscaping and landscaping works



VISION-MISSION

As Riva Interior Architecture, we create places that make your dream projects come true with the most effective solutions in every project we undertake, and we add you to the Riva Interior Architecture happy customer portfolio.

We aim to put our signature on projects where aesthetic touches meet effective engineering solutions by taking into account your demands, wishes, design ideas and budget criteria you offer.



CONTENTS

OFFICE-WORKPLACE PROJECTS

Rivamed Plaza	7-11
İskitler Sales Office	12-14
Yıldırım Tower Mak Consultancy Office	15-17
Arp Tower Velamed Medical Products Project	18-22
Sanus Health Services Factory Project	23-28

HOUSING PROJECTS

Gölbaşı Villa Project	30-33
Kırıkkale Villa Project	34-42
Okkalı-2 House Project	43-48

OFFICE PROJECT OFFICE PROJECTS

OFFICE PROJECTS OFFICE PROJECT

OFFICE PROJECTS OFFICE PROJECTS

OFFICE PROJECTS OFFICE PROJECT

OFFICE PROJECT OFFICE PROJECTS

OFFICE PROJECTS OFFICE PROJECT

OFFICE PROJECTS OFFICE PROJECT

OFFICE PROJECT OFFICE PROJECTS

RIVAMED PLAZA

Location: Yenimahalle/ANKARA

Construction Area: 1000 m²

Rivamed Plaza, located in Yenimahalle, Ankara.

Work applications and construction site coordination have been undertaken by Riva Interior Architecture in the form of turn-key.

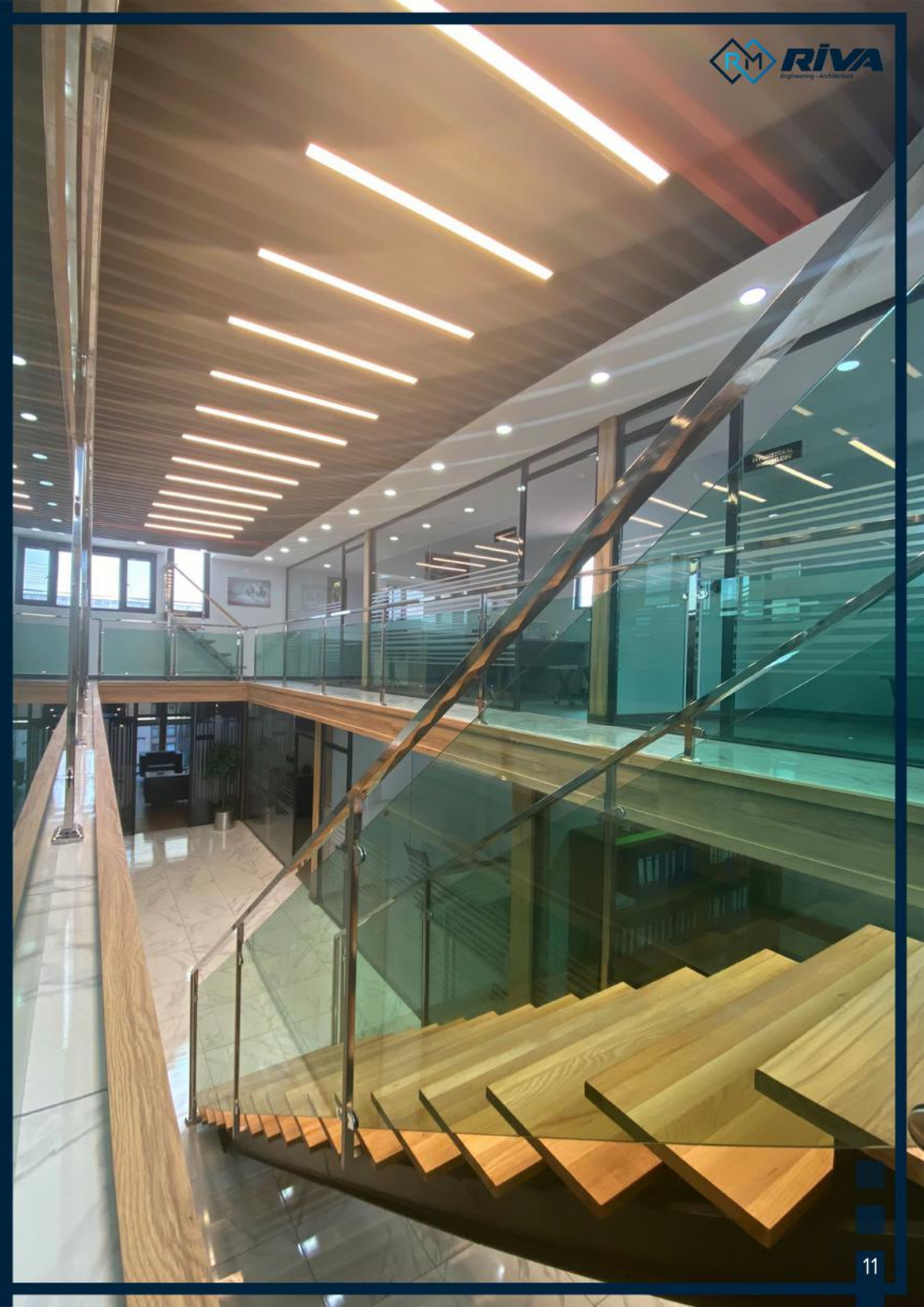
The project, which is the head office of Rivamed and Riva Interior Architecture companies, offers safe, modern spaces for office workers and shows its prestigious signature to its visitors inside the design. From the reception area to the meeting room and office rooms, functional solutions are a design that has been processed with an aesthetic eye and has acquired the goal of remaining as a picture of a memorable success for its users.











*"PROFESSIONAL
ARCHITECTURAL SOLUTIONS"*



VIP TOWER SALES OFFICE

Location: İskitler/ANKARA

Construction Area: 480 m²

VIP TOWER sales office project located in Ankara, İskitler

Work applications and construction site coordination were undertaken by Riva Interior Architecture.

In the VIP TOWER sales office project, which offers large presentation areas to its visitors and comfortable work spaces to its employees, the project has been completed with a detailed workmanship with durable, modern and high quality material selections, taking into account the prestigious location of the office in the future.



YILDIRIM TOWER MAK CONSULTINCY OFFICE

Location: Balgat/ANKARA

Construction Area: 100 m²

Un-finished office of MAK Consultinicy company located in Yildirim Tower, Ankara.

Work applications and construction site coordination were undertaken by Riva Interior Architecture.

Attention has been paid to functional-aesthetic harmony and fine business practices in the space for political research, agenda research, social research, information and technology consulting, file studies and legal consulting services that progress within the MAK Consultinicy Office. Special solutions have been made in accordance with the corporate stance of the company; material selections have been made with a high comfort rate and modernity suitable for the management function.







ARP TOWER VELAMED MEDICAL PRODUCTS OFFICE

Location: Konutkent/ANKARA

Construction Area: 400 m²

Velamed Medical Products un-finished office located in Arp Tower, Ankara.

Work applications and construction site coordination have been undertaken by Riva Interior Architecture in the form of turn-key.

Attention has been paid to the fine business practices of the venue for the services in anesthesia, intensive care, cardiovascular surgery and organ transplantation fields of activity that progress within the Velamed Medical products office. By analyzing the user profiles of office employees and visitors, hygienic, high comfort rate and modern material selections suitable for the management function were made.











SANUS HEALTH SERVICES FACTORY PROJECT

Location: Kahramankazan/ANKARA

Construction Area: 4200 m²

Sanus Health Services Factory project located in Kahramankazan, Ankara.

Work applications and construction site coordination have been undertaken by Riva Interior Architecture in the form of turnkey.

In the project, a clean room, the device room, storage areas, shipping areas, area, textile cutting, folding units, locker rooms, a dining hall for 100 people, Staff rest areas, office workers for individual rooms, open office areas, meeting rooms, conference room and office features. With our professional team, mechanical, electrical and coarse-fine construction items have been completed on a turnkey basis with effective application decisions.





"TURN-KEY APPLICATIONS"









HOUSING PROJECTS

GÖLBAŞI VILLA PROJECT

Location: Gölbaşı/ANKARA

Consturcture Area: 700 m²

A 4-storey villa project located in the Gölbaşı Ballıkpınar neighborhood of Ankara.

The design-projecting and ork applications of the project, was made by Riva Interior Architecture on a turn-key basis.

The project, which offers a warm and peaceful environment, has been carried out with careful construction practices with luxurious and durable material selections, taking into account user profiles, needs and wish lists. Spacious and functional areas have been created for users on the ground floor, first floor and attic floor. In the basement floor, a cinema room and an indoor sports room were built, which users can use with pleasure. In the garden of the villa, a staircase oriented to a specially designed entrance area with luxurious and durable materials, special stone coatings and green texture solutions were made in certain areas of the garden, taking into account environmental factors.







*"RIGHT APPLICATION,
FINE WORKMANSHIP"*



KIRIKKALE VILLA PROJECT

Location: KIRIKKALE

Constructure Area: 400 m²

Special design villa project located in Kirikkale.

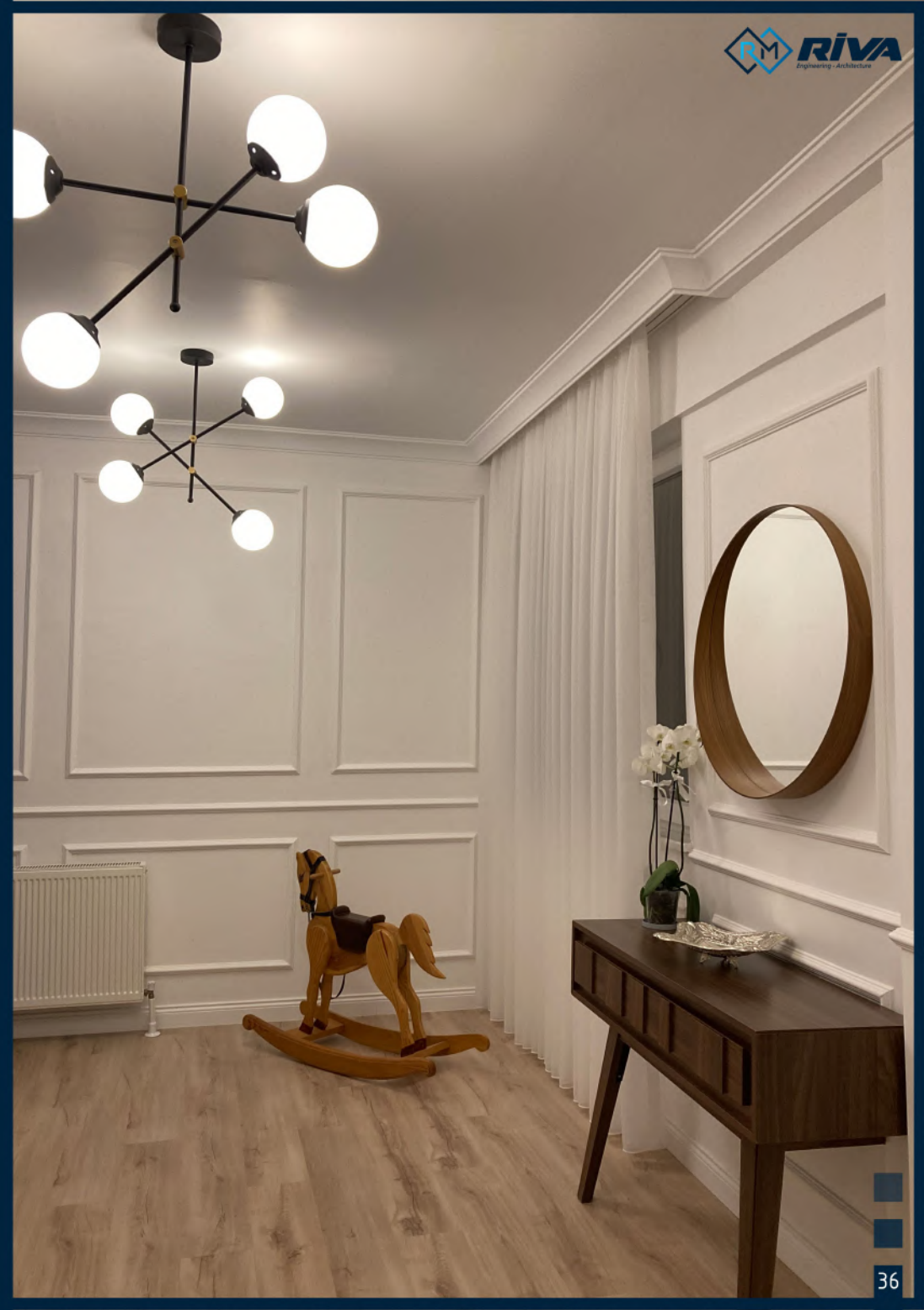
Work applications and construction site coordination were undertaken by Riva Interior Architecture and completed on a turn-key basis.

In this project, the project, design and implementation of which we have undertaken, it was aimed to design modern, spacious and breathable spaces that can meet the wishes and needs of users. A calm ambiance was created in the spaces with large square meters and simple-light colors. Attention was paid to the use of green texture in the garden of the villa and a pool proposal was put into practice to support our modern and luxurious design.





*"EXCELLENCE IN QUALITY,
INNOVATION AND DELIVERY"*



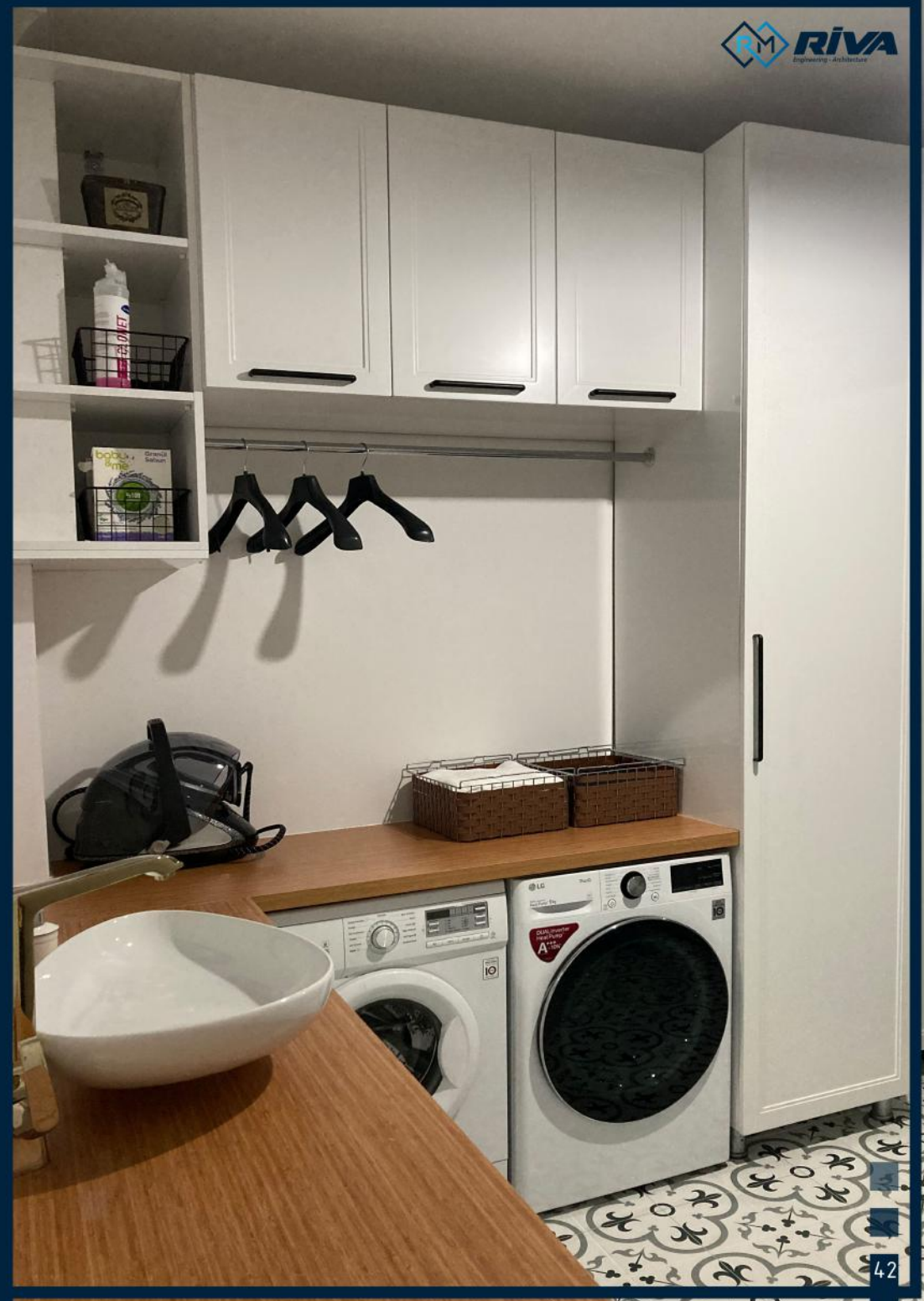












OKKALI-2 HPUSE PROJECT

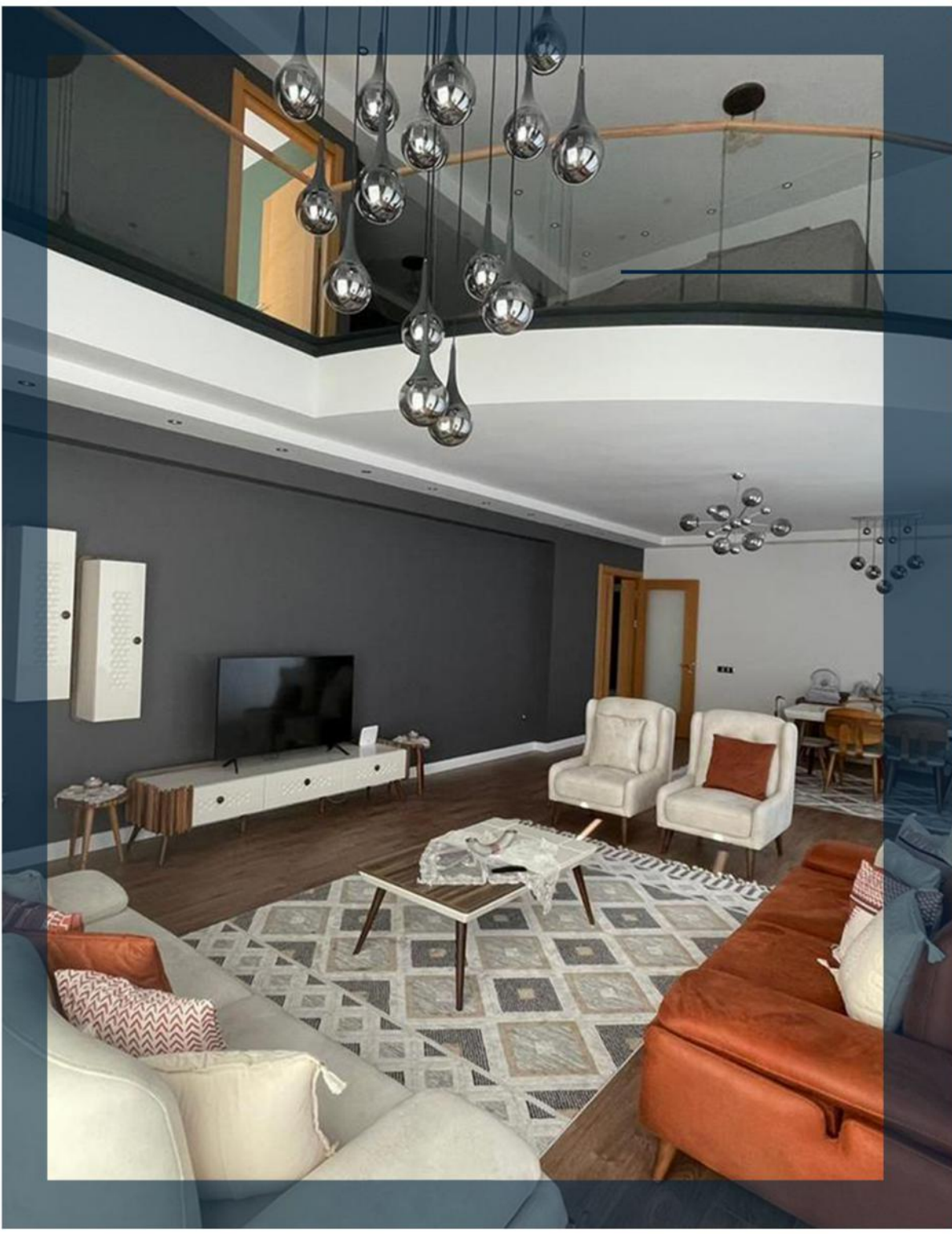
Location: Batıkent/ANKARA

Constructure Area: 300 m²

Okkali-2 residences duplex apartment project located in Ankara Batıkent

Work practices and construction site coordination were undertaken by Riva Interior Architecture.

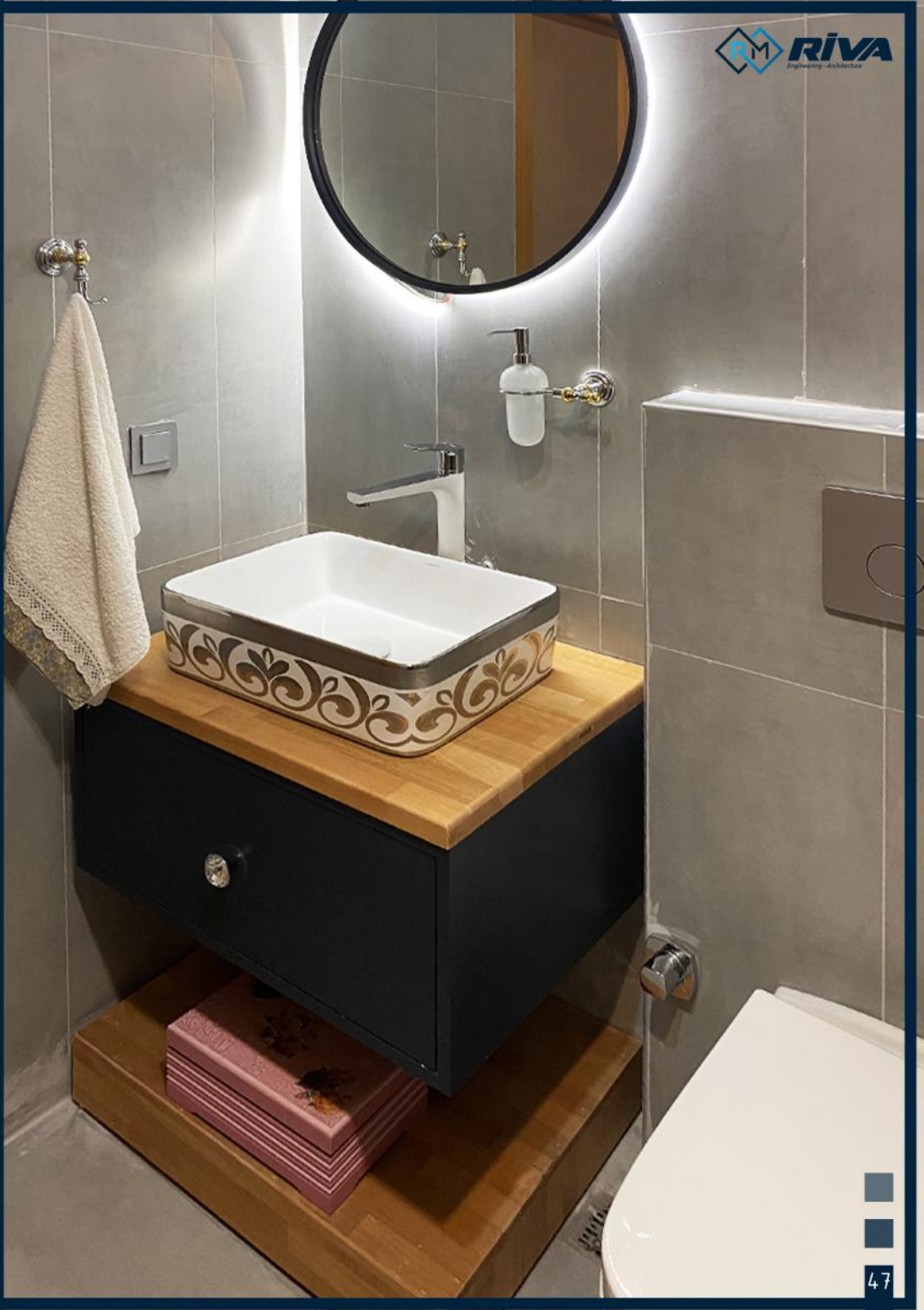
Considering user profiles, needs and wish lists, luxurious and durable material selections and meticulous finishing works were carried out. Spacious and functional areas were created. In the crowded atmosphere of Ankara, comfortable breathing spaces have been created for its users.













As Riva Interior Architecture; We make turn-key 2D and 3D projects and architectural applications of buildings such as residences, villas, shops, plazas, residences, cafes and restaurants from A to Z. We write the unique story of each project we cover and bring it to life.

You can contact us to realize the architectural projects of your dreams.

Phone: +90(312) 438 65 07 - 11

GSM: +90(507) 391 29 59

E-mail: info@rivaicmimarlik.com

WEB: www.rivaicmimarlik.com

Instagram: [@rivaicmimarlik](https://www.instagram.com/rivaicmimarlik)

LinkedIn: Riva İç Mimarlık